

Sinuses: sinusitis (infection)

Lungs: thick, sticky mucus build up, bacterial infection and widened airways

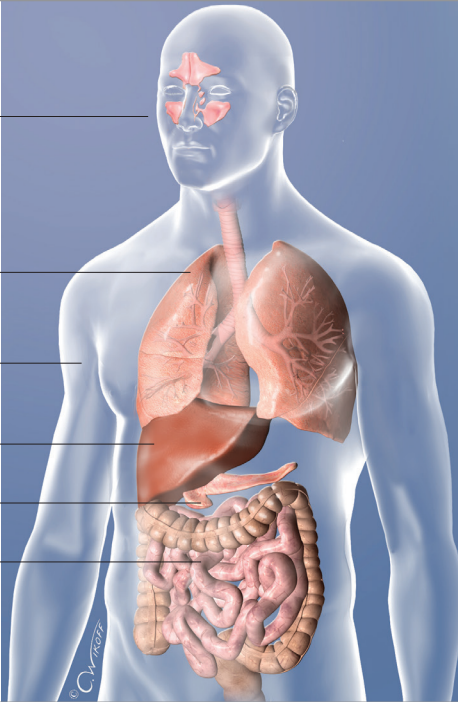
Skin: excessive salt (sodium chloride) loss through sweat

Liver: blocked biliary ducts

Pancreas: blocked pancreatic ducts

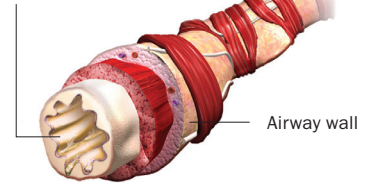
Intestines: cannot fully absorb nutrients

Reproductive organs: (male and female) complications



Normal airway

Airway lined with a thin layer of mucus



Airway with cystic fibrosis

Thick, sticky mucus blocks airway

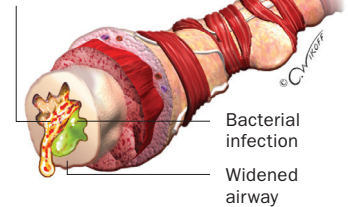


Figure. Organs affected by cystic fibrosis, including a comparison of a normal airway and an airway of a person with cystic fibrosis.