

ISSN 1443-430X

**SUPPLEMENT EDITORS**  
 Richard Stark AM, MB BS, FRACP, FANZAN, MACLM  
 Shuli Cheng MB BS, FRACP  
 Jason Ray MB BS, FRACP, PhD

**MANAGING EDITOR**  
 Marie Lofthouse BSc(Hons)

**DEPUTY MANAGING EDITOR**  
 Richa Gandhi BSc(Hons), MSc, MSc, PhD

**SENIOR ASSISTANT EDITORS**  
 Kate Murchison BSc(Hons)  
 Kerrie Lawson PhD, ELS, AE(IPEd)

**ASSISTANT EDITORS**  
 Aleta van Kerkhoff MSc, GDipClinEpid, ELS  
 Sally Nicholls BSc(Hons)  
 Katherine McLeod BSc(Hons), ELS

**MEDICAL WRITERS/ASSISTANT EDITORS**  
 Emily Lathlean MB BS, FRACGP  
 Sasha Ellery BM BCH

**PRODUCTION/DESIGN MANAGER**  
 Maria Marmora

**GROUP SALES & MARKETING MANAGER**  
 Prue Anderson

**SALES & MARKETING CO-ORDINATOR**  
 Chelsea Lay

**ACCOUNTS**  
 Pauline Burnard

**SUBSCRIPTIONS CO-ORDINATOR**  
 Katrina Lehmann

**EDITORIAL CO-ORDINATOR**  
 Amanda Goodsir

**PUBLISHER/EDITORIAL DIRECTOR**  
 Judy Passlow

**PUBLISHER/MANAGING DIRECTOR**  
 Tony Scott

**SYDNEY OFFICE**  
 Suite 503, Level 3  
 116 Military Road  
 Neutral Bay NSW 2089

**POSTAL ADDRESS**  
 PO Box 1473, Neutral Bay NSW 2089

**TELEPHONE** (02) 9908 8577  
**FACSIMILE** (02) 9475 0645

**EMAIL**  
*Editorial enquiries*  
 reception@medicinetoday.com.au

*Production enquiries*  
 mariamarmora@medicinetoday.com.au

*Advertising sales enquiries*  
 prueanderson@medicinetoday.com.au

*General enquiries*  
 reception@medicinetoday.com.au  
 Copyright 2025 Medicine Today Pty Ltd.

No part of this publication may be reproduced, stored in a retrieval system, or transmitted in any form or by any means (electronic, mechanical or photocopy recording or otherwise) in whole or in part, in any form whatsoever without the prior written permission of the Publisher.

The articles in this supplement have been subjected to *Medicine Today's* usual rigorous peer review process. Some products and/or indications mentioned may not be approved for use in Australia. Please review Product Information, available from the manufacturers, before prescribing any agent mentioned in these articles.

*Focus on headache* supplement is printed by Spotpress. Paper fibre is from sustainably managed forests and controlled sources.

COVER IMAGE: © JUANMONINO/ISTOCKPHOTO.COM  
 MODEL USED FOR ILLUSTRATIVE PURPOSES ONLY

# MedicineToday

THE PEER REVIEWED JOURNAL OF CLINICAL PRACTICE

## FOREWORD FROM THE SUPPLEMENT EDITORS

Headache is one of the most common and complex presentations in general practice. This *Focus on headache* supplement brings together expert advice to support GPs in navigating the wide spectrum of headache disorders – from the everyday to the potentially life-threatening.

It begins with a practical approach to investigating headache in primary care, before moving to a contemporary update on migraine management, including the latest treatment strategies. Chronic daily headache and the nuances of episodic migraine in women are explored in depth, highlighting diagnostic and therapeutic challenges. The supplement also covers unusual primary headache syndromes, the crucial recognition of thunderclap headache and the often-overlooked issue of medication overuse headache.

Together, these articles aim to sharpen diagnostic confidence and guide effective, evidence-based care for patients with headache.



**Dr Shuli Cheng** MB BS, FRACP  
 Neurologist in the Neurology Department,  
 The Alfred Hospital, Melbourne, Vic.



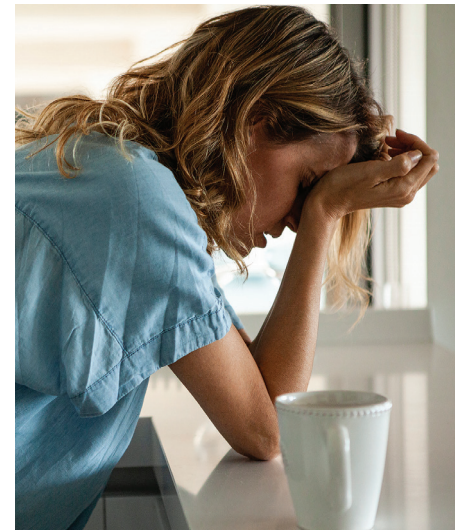
**Professor Richard J. Stark** AM,  
 MB BS, FRACP, FANZAN, MACLM  
 Neurologist in the Neurology  
 Department, The Alfred Hospital;  
 and Adjunct Clinical Professor in  
 the Department of Neuroscience,  
 Monash University, Melbourne, Vic.



**Dr Jason C. Ray** MBBS, FRACP, PhD  
 Neurologist in the Department of Neurology, Alfred Health and  
 the Department of Neurology, Austin Health, Melbourne; and a  
 Research Fellow in the Department of Neurosciences,  
 Monash University, Melbourne, Vic.

## CONTENTS PEER REVIEWED

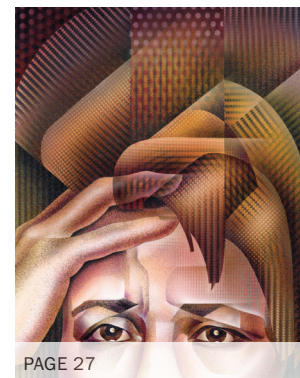
<b>Headache: investigating the cause</b>	<b>2</b>
RICHARD J. STARK AM	<b>CPD</b>
<b>Migraine in 2025: an update on management</b>	<b>8</b>
TAMSIN HILLIARD, JASON C. RAY, ELSPETH J. HUTTON, RICHARD J. STARK AM	
<b>Chronic migraine and other types of daily headaches</b>	<b>16</b>
RICHARD J. STARK AM, JASON C. RAY, ELSPETH J. HUTTON	<b>CPD</b>
<b>Episodic migraine in women</b>	<b>22</b>
ELSPETH J. HUTTON, SHULI CHENG, RICHARD J. STARK AM	<b>CPD</b>
<b>Unusual primary headaches: keys to an accurate diagnosis</b>	<b>27</b>
ELSPETH J. HUTTON, JASON C. RAY, RICHARD J. STARK AM	<b>CPD</b>
<b>Thunderclap headache: when the risk of doing nothing is too high</b>	<b>33</b>
SHULI CHENG, RICHARD J. STARK AM	
<b>Medication overuse headache: less is MOH</b>	<b>38</b>
LAKSHINI GUNASEKERA, JASON C. RAY, RICHARD J. STARK AM	



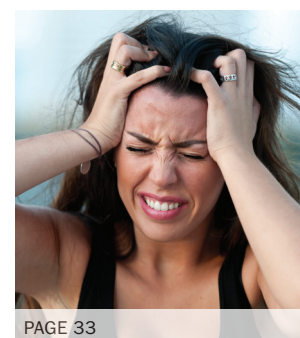
PAGE 2



PAGE 16



PAGE 27



PAGE 33