

ISSN 1443-430X

EDITOR-IN-CHIEF

Gayle Fischer OAM, MB BS, FACD, MD

MANAGING EDITOR

Nidhi Sodhi PhD

SENIOR ASSISTANT EDITORS

Kate Murchison BSc(Hons)
Kerrie Lawson PhD, ELS, AE(IPEd)
Marie Lofthouse BSc(Hons)

ASSISTANT EDITOR

Aleta van Kerkhoff MSc, GDipClinEpid, ELS

MEDICAL WRITER/ASSISTANT EDITOR

Emily Lathlean MB BS, FRACGP

PRODUCTION/DESIGN MANAGER

Maria Marmora

GROUP SALES & MARKETING MANAGER

Prue Anderson

SALES & MARKETING CO-ORDINATOR

Amy Scholefield

BUSINESS DEVELOPMENT MANAGER

Sarah Wylie

DIGITAL ENGAGEMENT MANAGER

Renata Schindler BA, BEd, GradCertBus

ACCOUNTS

Pauline Burnard

SUBSCRIPTIONS CO-ORDINATOR

Katrina Lehmann

EDITORIAL CO-ORDINATOR

Amanda Goodsir

PUBLISHER/EDITORIAL DIRECTOR

Judy Passlow

PUBLISHER/MANAGING DIRECTOR

Tony Scott

SYDNEY OFFICE

Suite 210
40 Yeo Street,
Neutral Bay NSW 2089

POSTAL ADDRESS

PO Box 1473, Neutral Bay NSW 2089

TELEPHONE (02) 9908 8577

FACSIMILE (02) 9475 0645

EMAIL

Editorial enquiries

reception@medicinetoday.com.au

Production enquiries

mariamarmora@medicinetoday.com.au

Advertising sales enquiries

prueanderson@medicinetoday.com.au

sarahwylie@medicinetoday.com.au

General enquiries

reception@medicinetoday.com.au

Copyright 2022 Medicine Today Pty Ltd.

No part of this publication may be reproduced, stored in a retrieval system, or transmitted in any form or by any means (electronic, mechanical or photocopy recording or otherwise) in whole or in part, in any form whatsoever without the prior written permission of the Publisher.

The articles in this collection were originally published in *Medicine Today* and have been updated as necessary. Each has been subjected to *Medicine Today's* usual rigorous peer-review process. The opinions expressed in the articles are those of the authors and not necessarily those of the publisher. Some products and/or indications mentioned may not be approved for use in Australia. Please review Product Information, available from the manufacturer, before prescribing any agent mentioned in these articles.

Dermatology Collection is printed by Spotpress.
Paper fibre is from sustainably managed forests
and controlled sources

Dermatology

Collection

PEER REVIEWED UPDATES FOR MEDICAL PRACTITIONERS

FOREWORD FROM THE EDITOR-IN-CHIEF, DERMATOLOGY COLLECTION

Our December 2022 Dermatology Collection covers a range of dermatological presentations and conditions.

Scalp pruritus is a frequent presentation to general practice that has a broad range of causes, some that are commonly managed in general practice and others that require dermatologist assessment. Read about how to differentiate between causes on history and examination, and the various treatment options available.

The global market for antiageing products is estimated at over \$40 billion and, with an ageing population, treatments are being more highly sought after. Field therapies – treatments that address the visible signs of photoageing – include topical therapies, cosmeceuticals, chemical peels and laser, light and other nonlaser modalities. Read about the general concepts of photoageing and some of the field therapies available.

Rosacea affects up to 5.5% of the global population and is a common condition managed in general practice. Its symptoms can be distressing for patients and appropriate treatment can improve their quality of life. Review the diagnostic features, differential diagnosis and treatment options for rosacea.

Finally, test your diagnostic skills with two Dermatology Clinic articles. What are the differential diagnoses and causes of the lesions in these case presentations of a 10-month-old boy with a pruritic papular eruption and a 65-year-old man with diffuse linear streaks on his trunk and limbs?



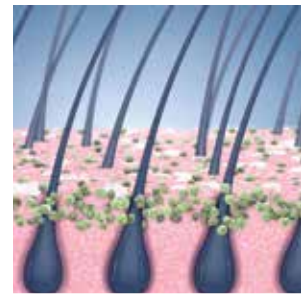
Gayle Fischer OAM, MB BS, FACD, MD
Clinical Professor of Dermatology at Sydney
Medical School – Northern, The University of Sydney,
Royal North Shore Hospital, Sydney, NSW.

CONTENTS PEER REVIEWED

| | |
|--|-----------|
| Scalp pruritus – scratching for answers | 2 |
| SARAH ROSE ADAMSON, RACHAEL DAVENPORT, ALVIN H. CHONG, PETER FOLEY | |
| An introduction to field therapies for photoageing | 13 |
| BELINDA LAI, STEPHEN SHUMACK | |
| Rosacea: a thorny problem with a rosy outlook | 23 |
| ANNELIESE WILLEMS, BELINDA WELSH, ALVIN H. CHONG | |
| Pruritic papules in a 10-month-old boy | 29 |
| ASHOD KHERLOPIAN, GAYLE FISCHER | |
| Diffuse linear streaks on the trunk and limbs | 31 |
| ASHOD KHERLOPIAN, GAYLE FISCHER | |



PAGE 13



PAGE 2



PAGE 23



PAGE 29



PAGE 31