

**SUPPLEMENT EDITOR**  
Professor Christine McDonald MB BS(Hons),  
PhD, FRACP, FThorSoc

**MANAGING EDITOR**  
Nidhi Sodhi BSc(Hons), PhD

**SENIOR ASSISTANT EDITORS**  
Kate Murchison BSc(Hons)  
Kerrie Lawson PhD, ELS, AE(IPEd)  
Marie Lofthouse BSc(Hons)

**ASSISTANT EDITORS**  
Aleta van Kerkhoff MSc, GDipClinEpid, ELS  
Michael Doris MBBS, ATCL  
Richa Gandhi BSc(Hons), MSc, MSc, PhD

**MEDICAL WRITER/ASSISTANT EDITOR**  
Emily Lathlean MB BS, FRACGP

**PRODUCTION/DESIGN MANAGER**  
Maria Marmora

**GROUP SALES & MARKETING MANAGER**  
Prue Anderson

**SALES & MARKETING CO-ORDINATOR**  
Amy Scholefield

**DIGITAL ENGAGEMENT MANAGER**  
Renata Schindler BA, BEd, GradCertBus

**ACCOUNTS**  
Pauline Burnard

**SUBSCRIPTIONS CO-ORDINATOR**  
Katrina Lehmann

**EDITORIAL CO-ORDINATOR**  
Amanda Goodsir

**PUBLISHER/EDITORIAL DIRECTOR**  
Judy Passlow

**PUBLISHER/MANAGING DIRECTOR**  
Tony Scott

**SYDNEY OFFICE**  
Suite 210, 40 Yeo Street,  
Neutral Bay NSW 2089

**POSTAL ADDRESS**  
PO Box 1473,  
Neutral Bay NSW 2089

**TELEPHONE** (02) 9908 8577  
**FACSIMILE** (02) 9908 7488

Printed by Spotpress.

Copyright 2024 Medicine Today Pty Ltd.

No part of this publication may be reproduced, stored in a retrieval system, or transmitted in any form or by any means (electronic, mechanical or photocopy recording or otherwise) in whole or in part, in any form whatsoever without the prior written permission of the Publisher.

The articles in this supplement have been subjected to *Medicine Today's* usual rigorous peer review process.

Some products and/or indications mentioned may not be approved for use in Australia. Please review Product Information, available from the manufacturers, before prescribing any agent mentioned in these articles.

Focus on COPD supplement is printed by Spotpress. Paper fibre is from sustainably managed forests and controlled sources.

COVER IMAGE: © TATJANA BAIBAKOVE/  
SHUTTERSTOCK.COM

## FOREWORD FROM THE SUPPLEMENT EDITOR

### Focus on COPD

Chronic obstructive pulmonary disease (COPD) affects millions of people worldwide and presents a significant burden to individuals, families and healthcare systems. As well as being burdensome in terms of day-to-day symptoms, this condition is frequently associated with exacerbations or flare-ups and is a leading cause of preventable hospitalisations and mortality. COPD demands our collective attention, and concerted efforts are required to ensure accurate and earlier diagnosis as well as better prevention and management.

In this supplement, titled *Focus on COPD*, our expert contributors offer insights into the latest research as well as their own clinical practice to provide the knowledge and tools necessary to effectively navigate the complexities of COPD management. Highlights include recommendations regarding the key role of spirometry, along with clinical assessment, in reaching a diagnosis; the practicalities involved in obtaining spirometric testing; a vignette-based and management focused discussion of so-called 'asthma-COPD overlap'; recommendations for preventing and managing COPD and its exacerbations, including new options; individualising the choice of inhaler and a consideration of the important role of pulmonary rehabilitation in managing patients with this disorder.



**Professor Christine McDonald** AM MB BS(Hons),  
PhD, FRACP, FThorSoc  
*Director of the Department of Respiratory and  
Sleep Medicine, Austin Health, and  
Professor of Respiratory Medicine at The University of  
Melbourne, Melbourne, Vic*

## FEATURE ARTICLES PEER REVIEWED

**Early diagnosis of COPD: recognising the opportunities** 3  
MARTIN MACDONALD

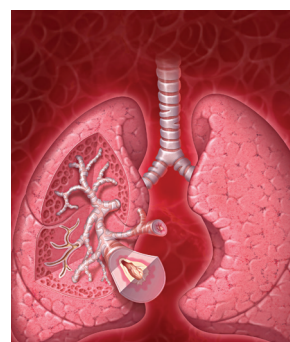
**New developments in COPD** 7  
LAUREN NG, ELI DABSHECK

**Inhaler therapy for COPD: an individualised approach to inhaler selection** 12  
DEBBIE RIGBY

**COPD exacerbations – a pragmatic approach to prevention, diagnosis and management** 17  
ELI DABSHECK, CARRIE-ANNE WAGNER, JANET G. SHAW,  
SAMANTHA C. KUNG, IAN A. YANG **CPD**

**Asthma-COPD overlap: implications for patient management** 23  
ALISTAIR COOK, JODIE SIMPSON, PETER WARK

**Pulmonary rehabilitation for COPD – 'Breathe easy, walk easy'** 29  
JENNIFER ALISON



PAGE 7



PAGE 23



PAGE 29