

Preventing diabetic kidney disease progression

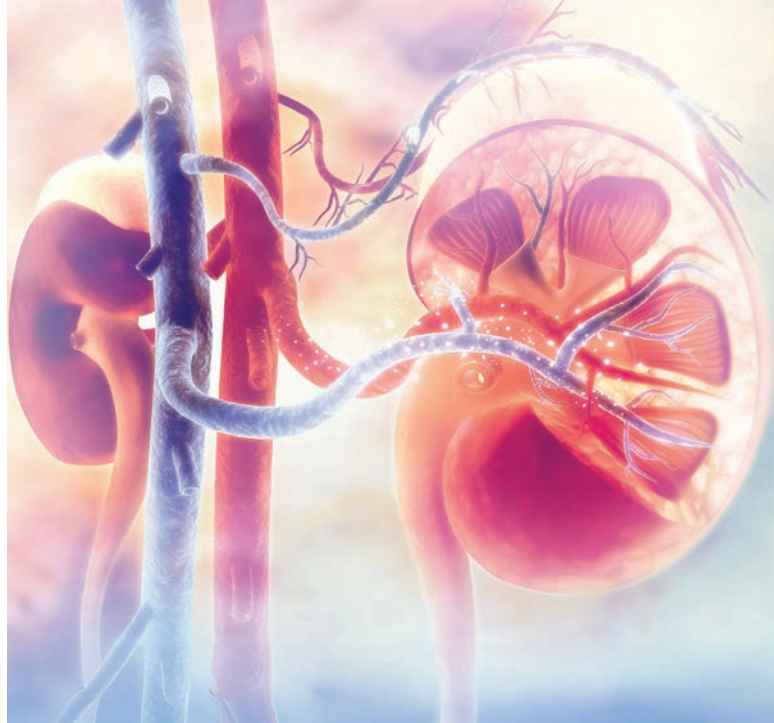
A 2025 update

JEAN C. LU MB BS, BMedSci, FRACP; **ELIF EKINCI** MB BS, FRACP, PhD
DAVID O'NEAL MD, FRACP, FRCP
RICHARD J. MACISAAC BSc(Hons), PhD, MB BS, FRACP

It is important to implement treatments to delay and prevent diabetic kidney disease progression by aiming for tight metabolic and blood pressure control and simultaneously addressing cardiovascular risk factors aggressively. Using pharmacological agents with cardiovascular and kidney benefits, including renin-angiotensin system inhibitors and sodium-glucose cotransporter-2 inhibitors, is paramount. Glucagon-like peptide-1 receptor agonists and finerenone have also been shown to have cardio-kidney protective properties.

KEY POINTS

- In patients with type 2 diabetes, screen for diabetic kidney disease (DKD) by measuring the albumin-to-creatinine ratio (ACR) in an early-morning spot urine sample and measuring the serum creatinine level to calculate the estimated glomerular filtration rate (eGFR).
- A diagnosis of DKD should be made if repeat testing confirms an elevated ACR (greater than 2.5 mg/mmol in men or greater than 3.5 mg/mmol in women) or an eGFR less than 60 mL/min/1.73 m².
- Delay the progression of DKD by aiming for glycaemic (general HbA_{1c} target: less than 53 mmol/mol) and blood pressure (general target: less than 130/80 mmHg) control.
- Use single-agent renin-angiotensin system inhibitors at maximally tolerated doses and, when appropriate, sodium-glucose cotransporter-2 inhibitors and finerenone to slow the progression of DKD.
- Semaglutide has also recently been shown to slow kidney function loss.
- Treat cardiovascular risk factors aggressively in patients with DKD.



The incidence of diabetes is increasing worldwide, secondary to the marked increase in the incidence of type 2 diabetes. Diabetes is also an established and major risk factor for the development and progression of chronic kidney disease (CKD). As a result, diabetes is now the leading cause of end-stage kidney disease in Western countries. Traditionally, diabetic kidney disease (DKD) has been referred to as 'diabetic nephropathy', but this is a term that should be reserved for people with progressive albuminuria. There is now growing appreciation that kidney impairment can develop in people with diabetes in the absence of increasing albuminuria and in the presence of other nondiabetes-related causes of CKD. Therefore, the term DKD is now preferred to describe CKD in people with diabetes.¹

DKD occurs in 25 to 40% of people with type 1 or type 2 diabetes who also have risk factors, including hyperglycaemia, hypertension, a history or current habit of smoking, poor plasma lipid control and a genetic predisposition.² People who have DKD have increased rates of morbidity and mortality, mainly

MedicineToday 2025; 26(11 Suppl): 15-21

First published in **MedicineToday** 2023; 24(8 Suppl): 15-21

Updated November 2025

Dr Lu is a Consultant Endocrinologist and PhD Candidate at St Vincent's Hospital Melbourne and the University of Melbourne. Professor Ekinci is the Director of Diabetes at Austin Health; Professor of Medicine, Weary Dunlop Medical Research Foundation Professorial Fellow and Director of the Australian Centre for Accelerating Diabetes Innovations (ACADI), School of Medicine, University of Melbourne. Professor O'Neal is a Professorial Fellow and Deputy Director of ACADI, School of Medicine, the University of Melbourne; and Laboratory Group Lead, Baker Heart and Diabetes Institute, Melbourne. Professor MacIsaac is the Director of Endocrinology and Diabetes at St Vincent's Hospital Melbourne; and Professorial Fellow and Co-Leader of the Diabetic Kidney Disease Stream at ACADI, School of Medicine, the University of Melbourne, Melbourne, Vic.

TABLE 1. MANAGEMENT STRATEGIES FOR CKD IN PEOPLE WITH DIABETES ACCORDING TO ALBUMIN LEVEL AND eGFR⁵

Albumin level (mg/mmol)	Recommended management and number of clinical visits per year by eGFR (mL/min/1.73 m ²)*					
	≥90 (normal to high)	60 to 89 (mild reduction)	45 to 59 (mild to moderate reduction)	30 to 44 (moderate to severe reduction)	15 to 29 (severe reduction)	<15 (kidney failure)
<3 (normal to mild increase)	Screen 1		Treat 1	Treat 2	Treat and refer 3	Treat and refer ≥4
3 to 29 (moderate increase)	Treat 1		Treat 2	Treat and refer 3		Treat and refer ≥4
≥30 (severe increase)	Treat and refer 3				Treat and refer ≥4	

Abbreviations: CKD = chronic kidney disease; eGFR = estimated glomerular filtration rate.

* The number in each cell is a guide to the recommended frequency of clinical visits (number of times per year).

because of the high risk of cardiovascular (CV) events.^{3,4} In parallel, kidney failure also predisposes to poorer glycaemic control (both hyper- and hypoglycaemia) because of an altered kidney physiology, which disrupts normal glucose and insulin metabolism. Therefore, in people with diabetes, the early identification of DKD and implementation of effective treatments are imperative to minimise the progression of CKD and its associated comorbidities.

However, the good news is that novel effective treatments to help prevent the progression of DKD in people with type 2 diabetes have been developed over the past decade. Ample evidence indicates that optimising metabolic health and using renin-angiotensin system (RAS) inhibitors and sodium-glucose cotransporter-2 (SGLT-2) inhibitors can delay the progression of DKD. The mineralocorticoid receptor antagonist finerenone and the glucagon-like peptide-1 receptor agonists are also emerging as effective therapies for slowing loss of kidney function in people with type 2 diabetes. This article focuses primarily on DKD management in people with type 2 diabetes. It was originally written in November 2023 for *Medicine Today* but has been updated in November 2025 to include information on new type 2 diabetes and CKD trial results and new indications for DKD protective medications.

Screening for diabetic kidney disease

Early-stage DKD is usually a silent disease, with minimal clinical manifestations until the patient has progressed to an advanced stage of kidney disease. Therefore, it is essential to screen for markers of kidney disease in people with diabetes as part of routine clinical care (Table 1).⁵

A spot urine sample should be collected annually to measure the albumin-to-creatinine ratio (ACR). A diagnosis of DKD should only be made if repeat testing confirms an elevation in this ratio (greater than 2.5 mg/mmol in men or greater than 3.5 mg/mmol in women). The urine ACR fluctuates by 30 to 40% on the basis of several factors, such as the presence of a fever, dehydration, vigorous physical activity or urinary tract infection. Therefore, if an abnormal ACR is found, perform one to two more tests over the subsequent three months to ensure persistent albuminuria.

Serum creatinine levels should be measured to calculate the estimated glomerular filtration rate (eGFR). A persistent eGFR less than 60 mL/min/1.73 m² indicates possible DKD, even in the absence of albuminuria if nondiabetes-related causes of CKD are excluded.

In patients with type 2 diabetes, the timing of onset is often difficult to determine; therefore, screening should begin

at the time of diagnosis. In patients with type 1 diabetes, the general approach is to start screening for DKD five years after diagnosis.⁶ However, earlier screening is suggested in people with poor metabolic control or other risk factors.

Screening for nondiabetic kidney disease

Careful consideration should be given to nondiabetic causes of CKD, particularly in patients with rapidly increasing albuminuria or decreasing eGFR. Factors that should alert clinicians to possible nondiabetic aetiologies include an absence of retinopathy, duration of diabetes less than five years, acute kidney injury pattern of kidney dysfunction rather than gradual progression, presence of haematuria, other systemic disease or nephrotic syndrome (albuminuria greater than 3 g/day, low serum albumin level, oedema and symptoms such as frothy urine). The absence of retinopathy and a short duration of diabetes are the strongest predictors that kidney disease is not diabetes-related, although DKD may still occur in some people without retinopathy.

A rapidly decreasing eGFR or rapidly increasing albuminuria should prompt referral of the patient to a nephrologist. A general cut-off of the eGFR of less than 30 mL/min/1.73 m² can also be used as a guide for referral, but ideally, the severity

TABLE 2. EFFECTS TO CONSIDER WHEN SELECTING GLUCOSE-LOWERING AGENTS IN PEOPLE WITH DIABETIC KIDNEY DISEASE⁵

Glucose-lowering agent	Glucose-lowering effect	Effect on risk of other conditions				Effect on body weight
		CKD progression	Atherosclerotic CVD	Heart failure	Hypoglycaemia	
Metformin	High	None	Reduction*	Reduction*	Reduction	None
SGLT-2 inhibitors	Intermediate	Reduction	Reduction	Reduction	Reduction	Reduction
GLP-1 receptor agonists	High	Reduction*	Reduction	Reduction*	Reduction	Reduction
DPP-4 inhibitors	Intermediate	None	None	Increase*	Reduction	None
Insulin	Very high	None	None	None	Increase	Increase
Sulfonylureas	High	None	None	None	Increase	Increase
Thiazolidinediones	High	None	Reduction*	Increase	Reduction	Increase
α-Glucosidase inhibitors	Intermediate	None	None	None	Reduction	None

Abbreviations: CKD = chronic kidney disease; CVD = cardiovascular disease; DPP-4 = dipeptidyl peptidase-4; GLP-1 = glucagon-like peptide-1; SGLT-2 = sodium-glucose cotransporter-2.
* Potential effect.

of albuminuria should also be taken into account, which may warrant the involvement of a nephrologist before arriving at this eGFR cut-off.⁵ Referral of the patient to a nephrologist is important, as complications such as volume overload, anaemia, electrolyte imbalances and CKD-related mineral and bone disorders can become prominent management issues when the eGFR declines to below the cut-off. Timely initiation of iron replacement, epoetin and phosphate-binding treatments are important considerations. Furthermore, early preparation for pre-emptive kidney or possible combined kidney and pancreas transplantation for type 1 diabetes is beneficial, as is early preparation for kidney replacement therapy.

Preventing the progression of diabetic kidney disease

Multimorbidity is common in people with DKD and, therefore, there is an increasing emphasis on comprehensive, holistic medical care to improve overall patient outcomes.⁵ This approach incorporates treatment directed to optimise lifestyle factors, targeted pharmacological therapy to preserve end-organ function and additional therapies to address risk factors such as glycaemia, hypertension and dyslipidaemia.

Management of lifestyle factors

The latest guidelines from the American Diabetes Association and Kidney Disease Improving Global Outcomes (KDIGO) highlight the role of patient education in nutritional management from dietitians for optimal diabetes management. The recommendation is for patients to consume balanced diets high in vegetables, fruits and whole grains but low in refined carbohydrates and sugar-containing sweetened beverages.^{7,8}

Although there is some evidence that low protein diets can slow the progression of DKD, this approach is rarely used in clinical practice. People with advanced-stage kidney disease on maintenance dialysis are advised to have a higher protein intake, considering that this population is often malnourished or in a catabolic state. Moderate to intense physical activity for more than 150 min/week and the avoidance of sedentary activity is also recommended.^{7,8} Tobacco should not be consumed by any person with diabetes. Alcohol consumption should be limited.⁶

Glycaemia management

Intensive glycaemic management (glycated haemoglobin [HbA_{1c}] less than 53 mmol/mol) delays the development

and progression of albuminuria and slows the rate of eGFR decline and progression to end-stage kidney disease. Early initiation of metformin treatment plus an SGLT-2 inhibitor is recommended in most people with type 2 diabetes, followed by the addition of glucose-lowering agents as needed to achieve individualised glycaemic targets (Table 2).⁵ Dose adjustment and medication choice based on the eGFR (Table 3) is important to take into consideration.⁵

Diabetes technologies, including continuous glucose monitors, are increasingly becoming a part of routine clinical management, particularly for type 1 diabetes, for which they are subsidised under the National Diabetes Services Scheme. Continuous glucose monitoring (CGM) technology is a powerful tool to identify and correct glycaemic derangements, prevent hypoglycaemia, direct medication management and guide medical nutritional therapy and physical activity recommendations. CGM technology with and without insulin pump therapy is an emerging attractive approach to help insulin-treated people with DKD optimise their glycaemic control.

Recommendations from the Joint British Diabetes Societies suggest the use of continuous glucose monitors, where

TABLE 3. DOSE ADJUSTMENTS OF GLUCOSE-LOWERING AGENTS IN PEOPLE WITH A LOW eGFR⁵

Glucose-lowering agent	eGFR (mL/min/1.73 m ²)		
	30 to 44	15 to 29	<15
Insulin	Start and titrate with caution to avoid hypoglycaemia		
Metformin	Reduce dose to 1000 mg/day	Do not use	
SGLT-2 inhibitors			
Dapagliflozin	Use 10 mg daily if eGFR is 25 to 44 mL/min/1.73 m ²	Do not start if eGFR <25 mL/min/1.73 m ² ; if using, may continue 10 mg daily if tolerated until dialysis	
Empagliflozin	Use 10 mg daily; do not start for glycaemic control if eGFR is <30 mL/min/1.73 m ² or for heart failure if eGFR is <20 mL/min/1.73 m ²	Do not start if eGFR <20 mL/min/1.73 m ² ; if using, may continue 10 mg daily if tolerated until dialysis	
GLP-1 receptor agonists			
Dulaglutide	No dose adjustment required		Limited experience, use with caution
Liraglutide	No dose adjustment required		Limited experience, use with caution
Semaglutide	No dose adjustment required		Limited experience, use with caution
DPP-4 inhibitors			
Alogliptin	Use maximum 12.5 mg daily (for eGFR 30 to 50 mL/min/1.73 m ²)	Use maximum 6.25 mg daily	
Linagliptin	No dose adjustment required		
Saxagliptin	Use maximum 2.5 mg daily		Not recommended
Sitagliptin	Use maximum 50 mg daily	Use maximum 25 mg daily	
Sulfonylureas (second generation)			
Gliclazide	Start at 30 mg daily with caution	Do not use	
Glimepiride	Start at 1 mg daily with caution; titrate slowly to avoid hypoglycaemia	Contraindicated	
Glipizide	Start at 2.5 mg daily with caution; titrate slowly to avoid hypoglycaemia		Contraindicated
Glibenclamide	Do not use		
Thiazolidinediones			
Pioglitazone	No dose adjustment required		Not recommended in patients on dialysis
α-Glucosidase inhibitors			
Acarbose	No dose adjustment required		Do not use

Abbreviations: DPP-4 = dipeptidyl peptidase-4; eGFR = estimated glomerular filtration rate; GLP-1 = glucagon-like peptide-1; SGLT-2 = sodium-glucose cotransporter-2.

available, in patients on dialysis as the best way to monitor glucose control (Figure).^{9,10} When CGM technology can be used, there is an emphasis on looking at the time in range, with the range defined as 3.9 to 10.0 mmol/L, rather than

using an HbA_{1c} target. The target time in range is greater than 70% for most people with diabetes. This should be achieved while minimising the time in range for hypoglycaemia, aiming for less than 4% in a range of less than 3.9 mmol/L.⁹

At the time of writing, there are no specific CGM targets for people with DKD.

Blood pressure management

A crucial goal for the prevention of CKD progression, cardiovascular disease

(CVD) and heart failure is managing blood pressure. For people with diabetes, hypertension and a high risk of atherosclerotic CVD (10-year risk greater than 15%), a blood pressure target of less than 130/80 mmHg is suggested. Previously, for those with diabetes, hypertension and a low risk of atherosclerotic CVD (10-year risk less than 15%), a blood pressure target of less than 140/90 mmHg was the recommendation.⁸ The general blood pressure target for people with diabetes has now been revised to 130/80 mmHg by the American Diabetes Association, and the systolic blood pressure target recommended by KDIGO for patients with CKD not on dialysis is less than 120 mmHg.¹¹ Therefore, lowering systolic blood pressure levels to less than 130 mmHg in most people with DKD and to less than 120 mmHg in high-risk patients may be a reasonable approach. The blood pressure targets should be individualised and account for possible adverse outcomes, such as postural hypotension, which is particularly relevant in people with concurrent autonomic neuropathy.

RAS inhibitors are the preferred initial pharmacological antihypertensive agents. It is important that these medications are titrated to maximally tolerated approved doses. They have been shown to decrease the risk of CKD, as well as slowing the progression to end-stage kidney disease in people with a reduced eGFR and macroalbuminuria. Calcium channel blockers are suggested as a second-line agent, followed by a diuretic as a third-line antihypertensive agent. General advice to patients to reduce salt intake by substituting with nonsalt-containing food flavourings (e.g. pepper, garlic, lemon and ginger) are also helpful lifestyle measures to lower blood pressure.

Finerone, a nonsteroidal mineralocorticoid receptor agonist, has impressive benefits in the setting of DKD; however, its blood pressure-lowering effect appears less than those of spironolactone and eplerenone (both steroidal mineralocorticoid receptor antagonists).

Management of lipid levels

Lipid-lowering agents, particularly statins, are the cornerstone of both primary and secondary prevention of atherosclerotic CVD, which has a markedly high risk of developing in people with DKD. There are no specific lipid targets for patients with diabetes and CKD, but it is recommended to initiate statin therapy in most of these patients who are not on dialysis.^{12,13} By virtue of having both diabetes and CKD, this population is considered to be at high risk for CVD. Therefore, the following targets are recommended:¹⁴

- LDL-cholesterol less than 2.0 mmol/L (or less than 1.8 mmol/L if CVD is established)
- HDL-cholesterol greater than 1.0 mmol/L
- triglycerides less than 2.0 mmol/L.

Proprotein convertase subtilisin/kexin type 9 (PCSK9) inhibitors (no adjustment for CKD but safety data with very advanced CKD are lacking) and inclisiran (no dose adjustment for CKD but not recommended for very advanced CKD) can also lower LDL-cholesterol levels and improve CV outcomes when added to statin therapy for secondary prevention.^{15,16} Some evidence indicates that fenofibrate, which is effective in treating hypertriglyceridaemia, attenuates albuminuria and eGFR decline in type 2 diabetes.¹⁷

Recent advances in pharmacological treatments

Sodium-glucose cotransporter-2 inhibitors

An SGLT-2 inhibitor is recommended in most people with type 2 diabetes and CKD, given the strong evidence that SGLT-2 inhibitors reduce CKD progression, heart failure and the risk of atherosclerotic CVD in people with type 2 diabetes and CKD. These effects are independent of HbA_{1c} levels or the need for additional glucose lowering.^{5,18}

The SGLT-2 inhibitors available in Australia are dapagliflozin and empagliflozin. These are not recommended for use

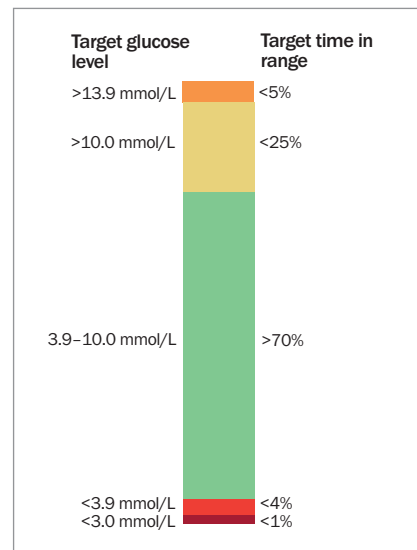


Figure. Continuous glucose monitoring-based targets for nonfrail people with diabetes.⁹

in patients with an eGFR less than 20 mL/min/1.73 m² (empagliflozin) or less than 25 mL/min/1.73 m² (dapagliflozin). Although SGLT-2 inhibitors maintain their renoprotective effects at low eGFRs, their glucose-lowering effects are significantly impaired. People with low eGFRs may therefore require the addition of other glucose-lowering therapies.

Both empagliflozin and dapagliflozin are PBS listed for proteinuric CKD, independent of diabetes status. However, from 1 November 2025 the PBS listing for empagliflozin has been expanded for use in patients with an eGFR of 20 to 90 mL/min/1.73 m². Patients must still have a urinary ACR of at least 22.6 mg/mmol if their eGFR is between 45 and 90 mL/min/1.73 m²; but for patients with an eGFR between 20 and less than 45 mL/min/1.73 m², empagliflozin is PBS subsidised regardless of albuminuria status (see Box 1 for the PBS criteria for empagliflozin and dapagliflozin for the indication of CKD). It is expected that dapagliflozin will obtain a similar PBS listing for CKD in the near future.

Both dapagliflozin and empagliflozin are TGA approved as an adjunct to standard care for the treatment of symptomatic heart failure, irrespective of

1. PBS INDICATIONS FOR DAPAGLIFLOZIN AND EMPAGLIFLOZIN IN PATIENTS WITH CKD*

Empagliflozin

- The patient must have a diagnosis of CKD present for at least 3 months AND
- eGFR 20 to 90 mL/min/1.73 m² prior to treatment initiation[†] AND
- uACR ≥22.6 mg/mmol if eGFR is between 45 and 90 mL/min/1.73 m² AND
- Not be receiving treatment with another SGLT-2 inhibitor AND
- Be stabilised on a RAAS inhibitor for at least four weeks unless medically contraindicated, before starting combination therapy with this drug

Dapagliflozin

- The patient must have a diagnosis of CKD present for at least 3 months AND
- eGFR 25 to 75 mL/min/1.73 m² prior to treatment initiation AND
- uACR 22.6 to 565 mg/mmol AND
- Not be receiving treatment with another SGLT-2 inhibitor AND
- Be stabilised on a RAAS inhibitor for at least four weeks unless medically contraindicated, before starting combination therapy with this drug

For both empagliflozin and dapagliflozin, the patient must discontinue treatment prior to initiating kidney replacement therapy (dialysis or transplant). Patients with polycystic kidney disease, lupus nephritis, ANCA-associated vasculitis, current/recent cytotoxic or immunosuppressive therapy for kidney disease or with an organ transplant are ineligible for treatment with this drug

* Refer to the PBS website for full details.

[†] The implication is that for patients with CKD with an eGFR between 20 and less than 45 mL/min/1.73 m², there is PBS indication for empagliflozin regardless of albuminuria status.

Abbreviations: ANCA = antineutrophil cytoplasmic antibody; CKD = chronic kidney disease; eGFR = estimated glomerular filtration rate; RAAS = renin-angiotensin-aldosterone system; SGLT-2 = sodium-glucose cotransporter-2; uACR = urine albumin-to-creatinine ratio.

ejection fraction or diabetes status. Both are PBS listed for symptomatic chronic heart failure with reduced ejection fraction (HFrEF, with left ventricular ejection fraction 40% or less) or with preserved ejection fraction. Refer to the

PBS schedule and TGA website for full details.

Importantly, despite the evidence for use of SGLT-2 inhibitors for DKD treatment, they should not be used in patients with type 1 diabetes because of the risk of euglycaemic diabetic ketoacidosis. SGLT-2 inhibitors can be associated with diabetic ketoacidosis in patients with type 2 diabetes, particularly during times of fasting or illness. Therefore, guidelines have been developed to address appropriate SGLT-2 inhibitor withdrawal for these cases.¹⁹

Glucagon-like peptide-1 receptor agonists

Many of the large-scale CV outcome trials of glucagon-like peptide-1 (GLP-1) receptor agonists for type 2 diabetes have included kidney disease outcomes as secondary outcomes. These studies have indicated a reduction in albuminuria or lower risk of new or worsening nephropathy and slowing of the expected eGFR decline.²⁰⁻²² Although a reduction in the progression to end-stage kidney disease is yet to be definitively demonstrated, evidence for this class of medication having cardio-kidney protective effects in people with type 2 diabetes is accumulating.

A trial of the effect of the GLP-1 receptor agonist semaglutide on the progression of CKD in people with type 2 diabetes and CKD has recently been published. The Evaluate Renal Function with Semaglutide Once Weekly (FLOW) trial showed that semaglutide (1 mg administered once weekly by subcutaneous injection) significantly reduced the primary composite outcome – kidney failure (defined as a persistent eGFR <15 mL/min/1.73 m² or initiation of chronic kidney replacement therapy), a sustained 50% reduction or more in eGFR, or death from kidney or CV causes – by 24% compared with placebo.²³ Given the above findings, semaglutide now has TGA approval for CKD and type 2 diabetes as an adjunct to standard of care to reduce the risk of sustained decline of kidney function and CV death.

In people with type 2 diabetes and advanced-stage CKD whose body mass index exceeds the limits required for kidney transplantation, the use of GLP-1 receptor agonists has been suggested to aid with weight loss. This may then facilitate eligibility for transplantation.

Furthermore, the TGA-approved dual glucose-dependent insulinotropic polypeptide/GLP-1 receptor agonist tirzepatide has some evidence of kidney benefit, based on a post-hoc analysis of the Tirzepatide versus insulin glargine in type 2 diabetes and increased cardiovascular risk (SURPASS-4) trial findings.²⁴ Dedicated kidney outcome trials of tirzepatide are warranted.

Nonsteroidal mineralocorticoid receptor antagonist

Finerenone has recently been investigated in people with DKD (defined as an ACR of at least 3 mg/mmol and eGFR of 25 to 75 mL/min/1.73 m²) who were treated with RAS inhibitors. This medication was shown to reduce the risk of CKD progression and kidney failure, as well as dialysis initiation, in the FIDELIO-DKD (Finerenone in Reducing Kidney Failure and Disease Progression in Diabetic Kidney Disease) trial, which involved participants with type 2 diabetes who had albuminuria and advanced CKD.²⁵ Furthermore, FIGARO-DKD (Finerenone in Reducing Cardiovascular Mortality and Morbidity in Diabetic Kidney Disease), which involved participants with stage 2 to 4 CKD and moderately elevated albuminuria or stage 1 or 2 CKD and severely increased albuminuria, showed a reduction in CV morbidity, most prominently through a reduction in heart failure-related hospitalisations, with finerenone therapy.²⁶

A pooled analysis of the findings of these two trials further showed the safety and efficacy of finerenone in a large cohort of patients with type 2 diabetes and CKD to reduce important kidney and CV outcomes.²⁷ Hyperkalaemia was an adverse effect in a small proportion of

participants; regular monitoring of potassium levels is recommended when using this medication.

Finerenone is TGA approved to delay progressive decline of kidney function and to reduce the risk of CV mortality and morbidity in adults with CKD (with albuminuria) associated with type 2 diabetes, in addition to standard of care. It is listed on the PBS for patients who fulfil the following criteria:

- an eGFR of 25 mL/min/1.73 m² or greater
- an ACR of 22.6 mg/mmol or greater
- must be on a stable dose of either an ACE inhibitor or ARB
- must not have established HFrEF
- must be on an SGLT-2 inhibitor unless medically contraindicated or intolerant (refer to the full PBS clinical criteria at: www.pbs.gov.au/pbs/home).

Combination therapy

Some evidence suggests that combination therapy with SGLT-2 inhibitors and mineralocorticoid receptor antagonists in patients with type 2 diabetes and CKD reduces the risk of CV events and the mineralocorticoid receptor antagonist-associated risk of hyperkalaemia without a significant interaction between the two drugs.²⁸ However, dedicated trials involving both SGLT-2 inhibitors and mineralocorticoid receptor antagonists are required to demonstrate the true benefits of combining these two classes of medications. The recently published COMbinationN effect of FInerenone and EmpaglifloziN in participants with chronic kidney disease and type 2 diabetes using a UACR Endpoint (CONFIDENCE) trial has shown that in people with type 2 diabetes and CKD (with albuminuria) the combination of finerenone and empagliflozin led to a greater reduction in albuminuria than either treatment alone.²⁹

Of note, even before the introduction of the newer classes of medications, multifactorial, target-driven therapies addressing glycaemic, blood pressure and lipid control that incorporated RAS

blockade, the use of statins and attention to lifestyle factors significantly reduced the progression to end-stage kidney disease by about 50% in people with type 2 diabetes, hypertension and microalbuminuria.³⁰

Sick day management

GPs can play an important role in reinforcing the principles of sick day management, especially those related to medication use, in people with DKD. The acronym 'SAD MANS' is a useful mnemonic to remember medications that may have reduced clearance and an increased risk of adverse effects in people with CKD (Box 2). Some medications need dose adjustments or withdrawing, especially in the setting of acute illness that can result in dehydration and acute kidney failure.

Most guidelines support the use of metformin in people with an eGFR of 30 mL/min/1.73 m² or greater (although not at maximum recommended doses) and that there is a growing appreciation of temporarily withholding SGLT-2 inhibitors when patients are unwell or need to fast for a prolonged period of time to prevent the development of euglycaemic diabetic ketoacidosis.

Conclusion

Screening people with diabetes for early markers of DKD and initiating measures to slow the progression of kidney disease are part of routine clinical practice. In addition, it is necessary to measure, assess and manage CV risk factors aggressively. Attention to glycaemic, blood pressure and lipid control, as well as improving lifestyle factors (e.g. consuming a healthy diet, avoiding weight gain and undertaking regular physical activity) remain the cornerstone of management in people with DKD. The use of RAS inhibitors, SGLT-2 inhibitors and novel agents, such as finerenone, have also been shown to slow the progression of DKD to end-stage kidney disease and provide CV protection. There is emerging evidence

2. SICK DAY MEDICATION LIST FOR PEOPLE WITH TYPE 2 DIABETES AND KIDNEY DISEASE ('SAD MANS')

- S – Sulfonylureas
- A – ACE inhibitors
- D – Diuretics
- M – Metformin
- A – Angiotensin receptor blockers
- N – NSAIDs
- S – Sodium-glucose cotransporter-2 inhibitors

for GLP-1 receptor agonists as renoprotective agents, but their role in slowing progression to end-stage kidney disease is yet to be established. Consideration of sick day management, patient education, the adjustment of glucose-lowering medications as the eGFR declines and screening for other microvascular diabetes-related complications (e.g. retinopathy and foot disease), together with a timely referral to a nephrology service, are important considerations in the optimal care of people with DKD. MT

References

A list of references is included in the online version of this article (<https://www.medicinetoday.com.au/mt/2025/november/supplements/focus-on-chronic-kidney-disease>).

COMPETING INTERESTS: Dr Lu and Professor O'Neal: None. Professor Ekinci has received research funding for her institution from Novo Nordisk, Eli Lilly, Sanofi, Boehringer Ingelheim and Versanis, Endogenex; consulting fees from Eli Lilly, Boehringer Ingelheim and Bayer (funds received are donated to The University of Melbourne for diabetes research); payment honoraria from Eli Lilly, Boehringer Ingelheim and Amgen (funds received are donated to The University of Melbourne for diabetes research); and support to attend national diabetes meetings from Eli Lilly. Professor MacIsaac was a recipient of St Vincent's Hospital Research Endowment Fund 2021–2024 and the Australian Government's Medical Research Future Fund (established by MTPConnect's Targeted Transition Research Accelerator initiative); received study funding from Medtronic, GlySens and Insulet. He was an Advisory Board Member for AstraZeneca (2021, 2023), Novo Nordisk (2021, 2024), Boehringer Ingelheim (2022), Bayer (2021–2023) and Servier (2021); and received speaker's fees from Boehringer Ingelheim (2021–2025), Novo Nordisk (2021–2025), Eli Lilly (2022) and Servier (2021).

Preventing diabetic kidney disease progression

An update

JEAN C. LU MB BS, BMedSci, FRACP; **ELIF EKINCI** MB BS, FRACP, PhD
DAVID O'NEAL MD, FRACP, FRCP; **RICHARD J. MACISAAC** BSc(Hons), PhD, MB BS, FRACP

References

1. Maclsaac RJ, Ekinci EI, Jerums G. Markers of and risk factors for the development and progression of diabetic kidney disease. *Am J Kidney Dis* 2014; 63: S39-S62.
2. Hall PM. Prevention of progression in diabetic nephropathy. *Diabetes Spectrum* 2006; 19: 18-24.
3. Barkoudah E, Skali H, Uno H, Solomon SD, Pfeffer MA. Mortality rates in trials of subjects with type 2 diabetes. *J Am Heart Assoc* 2012; 1: 8-15.
4. Groop P-H, Thomas MC, Moran JL, et al. The presence and severity of chronic kidney disease predicts all-cause mortality in type 1 diabetes. *Diabetes* 2009; 58: 1651-1658.
5. de Boer IH, Khunti K, Sadusky T, et al. Diabetes management in chronic kidney disease: a consensus report by the American Diabetes Association (ADA) and Kidney Disease: Improving Global Outcomes (KDIGO). *Diabetes Care* 2022; 45: 3075-3090.
6. Gross JL, de Azevedo MJ, Silveiro SP, Canani LH, Caramori ML, Zelmanovitz T. Diabetic nephropathy: diagnosis, prevention, and treatment. *Diabetes Care* 2005; 28: 164-176.
7. American Diabetes Association. Introduction: standards of medical care in diabetes—2022. *Diabetes Care* 2022; 45: S1-S2.
8. Kidney Disease: Improving Global Outcomes (KDIGO) Diabetes Work Group. KDIGO 2022 clinical practice guideline for diabetes management in chronic kidney disease. *Kidney Int*, 2022; 102: S1-S127.
9. Battelino T, Danne T, Bergenstal RM, et al. Clinical targets for continuous glucose monitoring data interpretation: recommendations from the international consensus on time in range. *Diabetes Care* 2019; 42: 1593-1603.
10. Frankel AH, Wahba M, Ashworth V, et al. Management of adults with diabetes on dialysis: Summary of recommendations of the Joint British Diabetes Societies guidelines 2022. *Diabet Med* 2023; 40: e15027.
11. Kidney Disease: Improving Global Outcomes (KDIGO) Blood Pressure Work Group. KDIGO 2021 clinical practice guideline for the management of blood pressure in chronic kidney disease. *Kidney Int* 2021; 99: S1-S87.
12. Wanner C, Tonelli M; Kidney Disease: Improving Global Outcomes Lipid Guideline Development Work Group Members. KDIGO clinical practice guideline for lipid management in CKD: summary of recommendation statements and clinical approach to the patient. *Kidney Int* 2014; 85: 1303-1309.
13. Sharp Collaborative Group. Study of Heart and Renal Protection (SHARP): randomized trial to assess the effects of lowering low-density lipoprotein cholesterol among 9,438 patients with chronic kidney disease. *Am Heart J* 2010; 160: 785-794.e10.
14. Royal Australian College of General Practitioners. Management of type 2 diabetes: a handbook for general practice. East Melbourne: Victoria; 2020.
15. Schwartz GG, Steg PG, Szarek M, et al. Alirocumab and cardiovascular outcomes after acute coronary syndrome. *N Engl J Med* 2018; 379: 2097-2107.
16. Sabatine MS, Giugliano RP, Keech AC, et al. Evolocumab and clinical outcomes in patients with cardiovascular disease. *N Engl J Med* 2017; 376: 1713-1722.
17. Keech A, Drury P, Davis TM, et al. Protection against nephropathy with fenofibrate in type 2 diabetes mellitus: the FIELD study. *Am Heart Assoc* 2009; 120: S419-S420.
18. American Diabetes Association Professional Practice Committee. 11. Chronic kidney disease and risk management: standards of medical care in diabetes-2022. *Diabetes Care* 2022; 45: S175-S184.
19. Peri-procedural diabetic ketoacidosis (DKA) with SGLT2 inhibitor use in people with diabetes (May 2023). Sydney: Australian Diabetes Society; 2023. Available online at: <https://www.diabetessociety.com.au/guideline/> https-www-diabetessociety-com-au-wp-content-uploads-2023-05-ads-adea-anzca-nzssd_dka_sglit2_alert_ver-may-2023-pdf/ (accessed November 2025).
20. Marso SP, Holst AG, Vilsbøll T. Semaglutide and cardiovascular outcomes in patients with type 2 diabetes. *N Engl J Med* 2017; 376: 891-892.
21. Gerstein HC, Colhoun HM, Dagenais GR, et al. Dulaglutide and cardiovascular outcomes in type 2 diabetes (REWIND): a double-blind, randomised placebo-controlled trial. *Lancet* 2019; 394: 121-130.
22. Marso SP, Daniels GH, Brown-Frandsen K, et al. Liraglutide and cardiovascular outcomes in type 2 diabetes. *N Engl J Med* 2016; 375: 311-322.
23. Perkovic V, Tuttle KR, Rossing P, et al. Effects of semaglutide on chronic kidney disease in patients with type 2 diabetes. *N Engl J Med* 2024; 391: 109-121.
24. Heerspink HJL, Sattar N, Pavo I, et al. Effects of tirzepatide versus insulin glargine on kidney outcomes in type 2 diabetes in the SURPASS-4 trial: post-hoc analysis of an open-label, randomised, phase 3 trial. *Lancet Diabetes Endocrinol* 2022; 10: 774-785.
25. Bakris GL, Agarwal R, Anker SD, et al. Effect of finerenone on chronic kidney disease outcomes in type 2 diabetes. *N Engl J Med* 2020; 383: 2219-2229.
26. Pitt B, Filippatos G, Agarwal R, et al. Cardiovascular events with finerenone in kidney disease and type 2 diabetes. *N Engl J Med* 2021; 385: 2252-2263.
27. Agarwal R, Filippatos G, Pitt B, et al. Cardiovascular and kidney outcomes with finerenone in patients with type 2 diabetes and chronic kidney disease: the FIDELITY pooled analysis. *Eur Heart J* 2022; 43: 474-484.
28. Tsukamoto S, Morita R, Yamada T, et al. Cardiovascular and kidney outcomes of combination therapy with sodium-glucose cotransporter-2 inhibitors and mineralocorticoid receptor antagonists in patients with type 2 diabetes and chronic kidney disease: A systematic review and network meta-analysis. *Diabetes Res Clin Pract* 2022; 194: 110161.
29. Agarwal R, Green JB, Heerspink HJL, et al. Finerenone with empagliflozin in chronic kidney disease and type 2 diabetes *N Engl J Med* 2025; 393: 533-543.
30. Oellgaard J, Gæde P, Rossing P, Persson F, Parving HH, Pedersen O. Intensified multifactorial intervention in type 2 diabetes with microalbuminuria leads to long-term renal benefits. *Kidney Int* 2017; 91: 982-988. Erratum in: *Kidney Int* 2017; 91: 1257.